

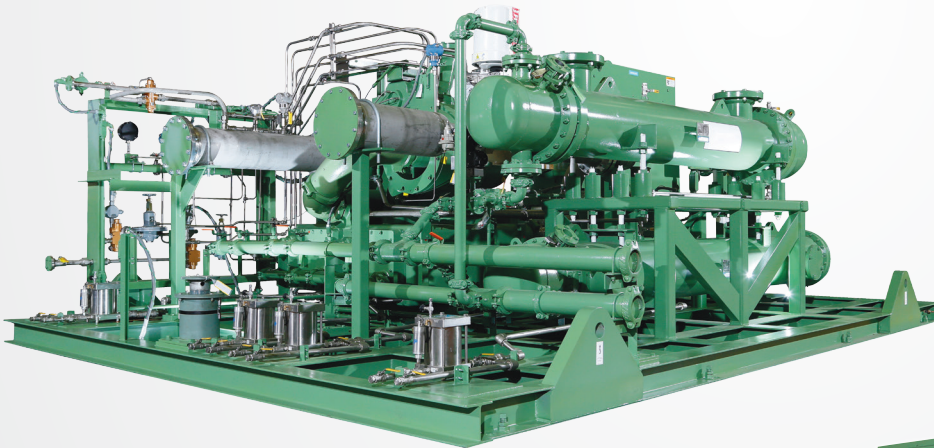
## **TURBO-GAS Compressors**

*Standard, packaged centrifugal compressors  
for process gas applications*

TURBO-GAS™ compressors are efficient, reliable solutions for your gas compression needs. Depend on TURBO-GAS compressors for reliability combined with minimal maintenance to deliver a low total cost of operation and ownership.



Don't vent your valuable methane to the atmosphere. Capture and combust it to generate efficient, sustainable power.



**TURBO-GAS 6040**



**TURBO-GAS 2040**

# Why Choose TURBO-GAS Compressors?

## Oil-free Gas

- Prevents oil contamination of your system
- Reduces NO<sub>x</sub> and carbon footprint

## High Reliability

- Patented non-contacting gas seal design
- Conservative gearing design
- Stainless steel compression elements
- Patented, low-pressure hydrostatic squeeze-film pinion bearings
- Centrifugal compressors are proven to have a long mean time between failures (MTBF), and independent research has shown an industry-leading availability of 99.7%.

## Easy, Low Cost Maintenance

- Compression elements do not wear or require periodic replacement

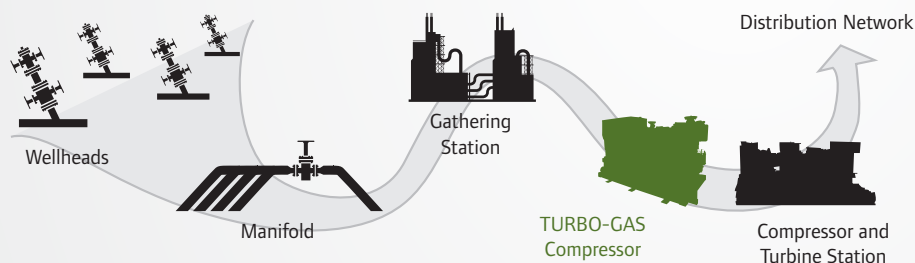
## Simple Installation

- Compact design offers minimum number of connections
- No foundations required
- Complete package ready for plug-and-play

## Proven Technology

- Since 1955, Ingersoll Rand Engineered Centrifugal Compression has manufactured more than 14,000 centrifugal compressors.

## Typical Landfill Gas-to-Energy System



Ingersoll Rand (NYSE:IR) advances the quality of life by creating comfortable, sustainable and efficient environments. Our people and our family of brands—including Club Car®, Ingersoll Rand®, Thermo King® and Trane®—work together to enhance the quality and comfort of air in homes and buildings; transport and protect food and perishables; and increase industrial productivity and efficiency. We are a \$13 billion global business committed to a world of sustainable progress and enduring results.



Ingersoll Rand, IR, the IR logo and TURBO-GAS are trademarks of Ingersoll Rand, its subsidiaries and/or affiliates. All other trademarks are the property of their respective owners.

Nothing contained on these pages is intended to extend any warranty or representation, expressed or implied, regarding the product described herein. Any such warranties or other terms and conditions of sale of products shall be in accordance with Ingersoll Rand's standard terms and conditions of sale for such products, which are available upon request.

Product improvement is a continuing goal at Ingersoll Rand. Any designs, diagrams, pictures, photographs and specifications contained within this document are for representative purposes only and may include optional scope and/or functionality and are subject to change without notice or obligation.

## Applications and Industries Served

- Gas Boosting
- Renewable Energy
- Air Separation
- Power Generation
- Chemical
- Petrochemicals
- Gas Processing
- Siloxane Removal
- Multiple Process

## Gases Handled

- Landfill Gas
- Biogas
- Natural Gas
- Digester Gas
- CO
- CO<sub>2</sub>
- Nitrogen

## TURBO-GAS 2040

- Max Flow: 85 m<sup>3</sup>/min (3000 CFM)
- Max Pressure: 42 barg (610 psig)
- Max Power: 600 kW (800 hp)

## TURBO-GAS 6040

- Max Flow: 167 m<sup>3</sup>/min (6000 CFM)
- Max Pressure: 42 barg (610 psig)
- Max Power: 1700 kW (2250 hp)

[centrifugal.ingersollrand.com](http://centrifugal.ingersollrand.com)